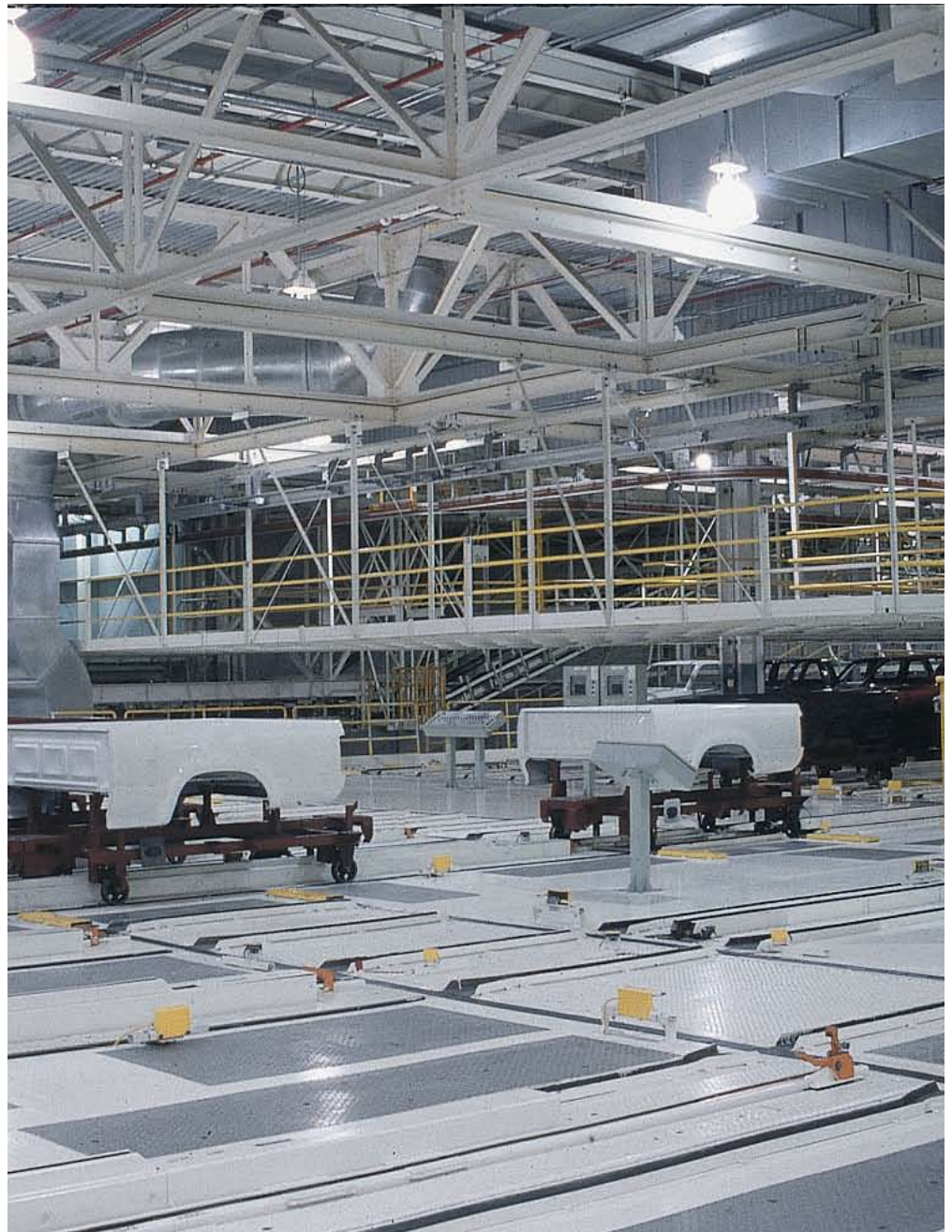




PRO

INDUSTRIAL

MULTI-SURFACE ACRYLIC



Ideal for marginally prepared surfaces, where stain resistance is critical.



Where High Hide is Essential and Cleaning Impractical

Pro Industrial™ Multi-Surface Acrylic is specifically engineered to provide high hide and good stain resistance. This interior/exterior, self-priming, waterborne gloss acrylic can be applied to marginally clean surfaces, making it ideal for use on walls and ceilings found in warehouses, manufacturing structures, schools, hospitals, hotels, commercial buildings and industrial sites, where a thorough cleaning is impractical. It provides excellent color and gloss retention and is great for use on a variety of substrates.



One Product for Multiple Substrates

Pro Industrial™ Multi-Surface Acrylic is a dryfall-type coating that provides alkyd-like hardness. It is ideal when multiple substrates need to be painted, but only one product purchase is desired. It is available in a wide range of colors. This low-odor, low-VOC, fast-drying gloss acrylic is easy to apply by brush, roll or spray and is intended for interior and exterior use on marginally prepared surfaces.

Convenience Meets Durability

- | | |
|-------------------------------------------------------------------------------------------|-----------------------------------------------------------------------------------------------------|
| <ul style="list-style-type: none"> • High hiding, high stain-blocking | <ul style="list-style-type: none"> • All-purpose finish for multiple surfaces |
| <ul style="list-style-type: none"> • Surface tolerant | <ul style="list-style-type: none"> • Non-yellowing |
| <ul style="list-style-type: none"> • Impact-resistant, alkyd-like hardness | <ul style="list-style-type: none"> • Highly flexible, resists peeling and chipping |
| <ul style="list-style-type: none"> • Low-odor and low-VOC | <ul style="list-style-type: none"> • Fast-drying |
| <ul style="list-style-type: none"> • Non-flammable | <ul style="list-style-type: none"> • Acceptable for use in USDA inspected facilities |
| <ul style="list-style-type: none"> • Excellent color and gloss retention | |

High Performance Coatings

From commercial buildings to industrial facilities, Sherwin-Williams has the most comprehensive line of high performance coatings. Our commitment to product innovation and understanding your needs has led to the introduction of Pro Industrial High Performance Coatings.

With our new line of Pro Industrial products, we have high performance coating solutions for Healthcare, Hospitality, Educational, Commercial and Industrial facilities.

Industry-Leading Innovation From A Name You Can Trust

For over 140 years, Sherwin-Williams has provided contractors like you with the innovative products and services needed to build your business. And with over 3300 stores and sales representatives across North America, personalized service is always available near jobsites.

To learn more, visit
sherwin-williams.com
 or call 1-800-524-5979 to have
 a representative contact you.

