

# LOXON<sup>®</sup> Conditioner

*Secures chalky surfaces  
for excellent topcoat adhesion.*



*Prevents adhesion  
problems and  
delamination so you  
can bid and paint  
with confidence.*

## **LOXON CONDITIONER advantages**

- Can be applied as a penetrating sealer to fresh concrete after just 7 days
- Use on poured-in-place concrete, tilt-up, stucco and brick
- Use with a wide range of topcoats, including A-100, Loxon and most latex building finishes
- Low film build to penetrate deeply
- 100% acrylic formula for excellent durability and weathering
- Helps prevent topcoat alkali burn and delamination
- Available in guide coat white or clear emulsion
- VOC compliant

## **The benefits to you**

LOXON Conditioner assures you of topcoat adhesion and performance by creating a surface you can paint with confidence. It's an economical alternative to priming and particularly useful where the existing topcoat has deteriorated over time. It also makes a great sealer coat for new construction. Whether you're covering rough brick or smooth concrete, new or previously painted, LOXON Conditioner's excellent penetration promises trouble-free topcoat adhesion.





# LOXON<sup>®</sup>

## Conditioner

### LOXON Conditioner

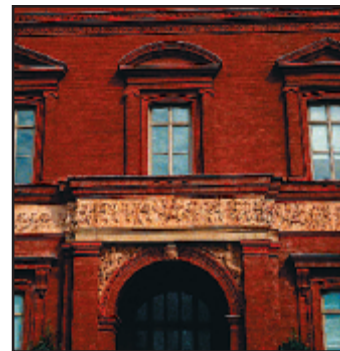
*Proven on concrete, brick  
and stucco nationwide*



*Apply on new construction after  
only a seven day cure.*



*LOXON Conditioner's penetrating  
formula goes on quickly and easily.*



*Secure old brick and masonry  
substrates before repainting.*

#### ***Allows you to bid the toughest jobs.***

Don't be concerned about chalky or powdery paint on masonry. LOXON Conditioner will bond light chalk, old paint and dusting concrete, creating a dependable surface for topcoat adhesion. Its thin formula applies easily with brush, roller, or spray without reduction. On new work, it prevents delamination and pH burn to keep you off the "punch list."

#### ***LOXON Conditioner boosts productivity.***

It dries to the touch in 30 minutes and is ready for recoating in just 3 hours. That means you can finish the job the same day. Because it can be applied to new concrete surfaces with a pH level as high as 13, you can coat new masonry surfaces after 7 days instead of 30.

#### ***Inside or out, LOXON seals the job.***

It's the perfect choice for single-family homes, multi-family units, condos, commercial properties or institutional buildings. Apply it to everything from brick to stucco to poured-in-place concrete, then topcoat it for an attractive finish that lasts and lasts.

#### ***Learn more about LOXON Masonry Conditioner and Sherwin-Williams.***

At Sherwin-Williams, you'll get the most complete line of quality paints, stains and painting supplies, technical advice, on-site delivery and over 2200 locations nationwide. Call 1-800-336-1110, ext. 1097 to have a professional representative contact you.

## LOXON<sup>®</sup>

### Conditioner

